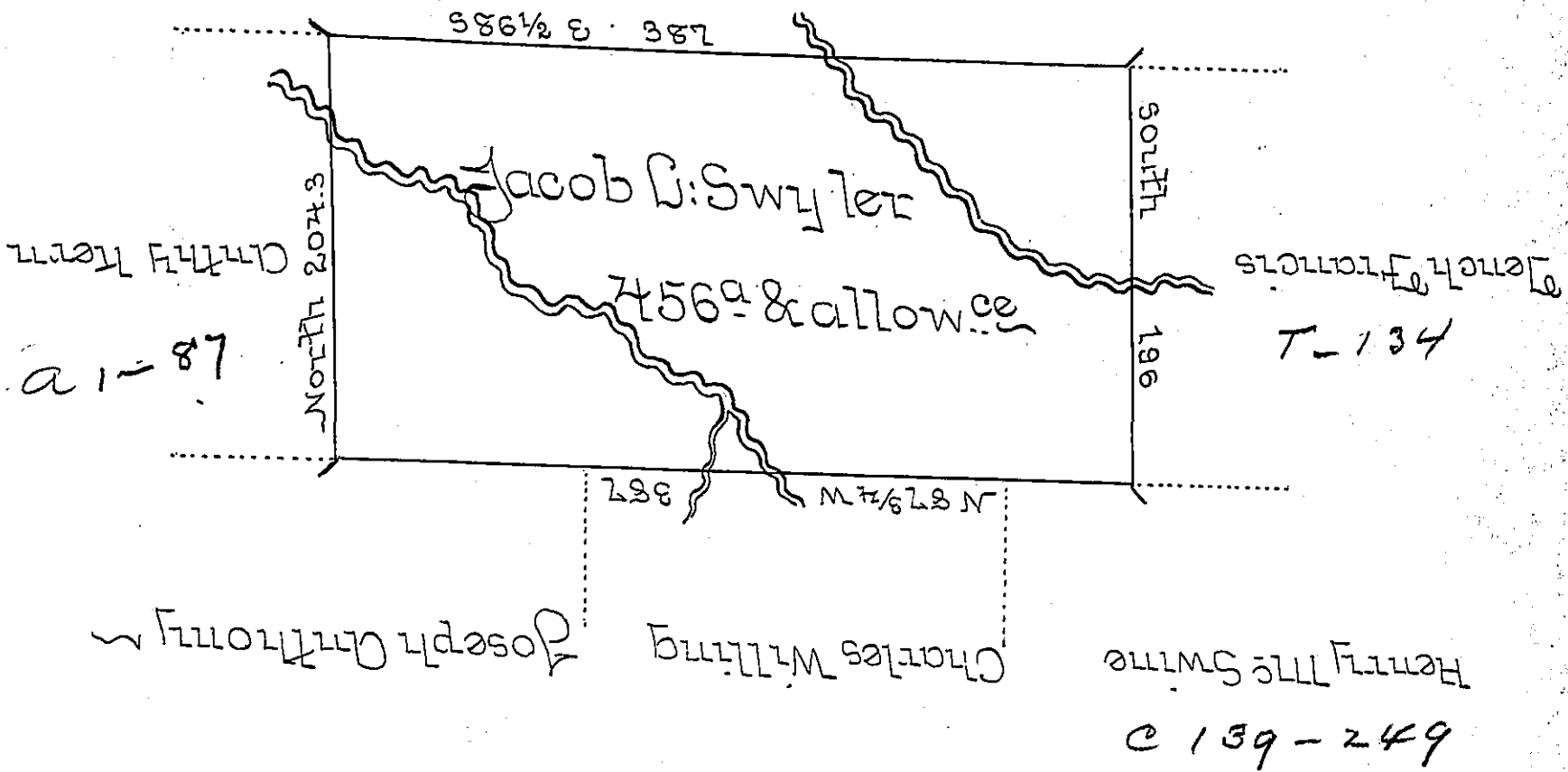


State of New York



A Draught of a Tract of land Called _____ situate Adjoin-
 ing land of Trench Francis and others in Luzerne County
 Surveyed on the 15th day of September 1787 for Jacob
 B: Swyler by Virtue of a warrant dated the 26th day of
 July 1787 Containing four Hundred and fifty Six
 acres and allow^{ce} of 6 P. Ct. for Roads &c ——— " ———

To John Lukens Esq: }
 Surveyor Genl }
 by Wm Gray D.S.

IN TESTIMONY that the above is a copy of the original remaining on file in the
 Department of Internal Affairs of Pennsylvania, made con-
 formably to an Act of Assembly approved the 16th day of
 February, 1833, I have hereunto set my Hand and caused
 the Seal of said Department to be affixed at Harrisburg, this
 ——— second ——— day of ——— November ——— 1897 ———

James W. Latta
 Secretary of Internal Affairs.